

PVC-U Safeblock water ball valves

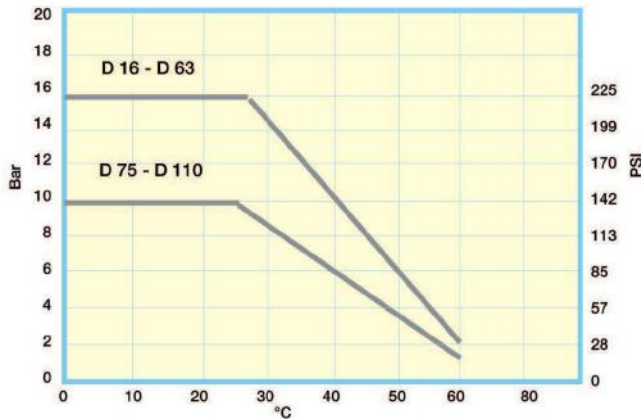
General characteristics

Single and Double Union Ball Valve - compact type - characterized by optimal handling, full flow, axial pipe load block with micro-adjustment of ball seat. Moreover in closed position the pipeline can be disconnected downstream from the valve.

Features outlined make TP valves particularly suited for the following applications: distribution, treatment and sewage water, swimming pools, water parks and aquaculture.

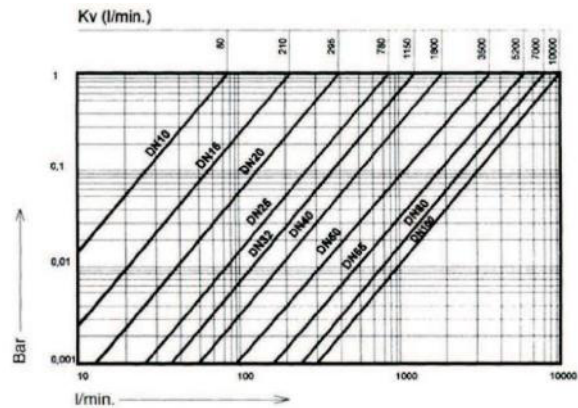
MAX WORKING PRESSURE

The a. m. technical information should be used as a guide. Please consult our Technical dpt for specific queries.



Pressure temperature rating for water and harmless liquid.

CHARGE LOSS



With water at 20°C and the valve in open position

TORQUE

D	G	Nm
16-20	3/8"-1/2"	0,7
25	3/4"	2
32	1"	3,5
40	1" 1/4	7
50	1" 1/2	9
63	2"	13
75	2" 1/2	24
90	3"	30
110	4"	48

Max torque at max working pressure.

Installation and use

When glueing the end connector of the pipe, care must be taken to prevent the glue or solvent from coming in contact with the valve seats or ball.

Threaded ends should not be connected with cone-shaped male threads and the use of hemp or similar materials should be carefully avoided. A special attention should be paid to the correct line-up of the installation. Tighten the union nut hand tight only. The use of wrench is not allowed. It is important that the unions are not used to pull the system together.

If there is any leakage from the union nuts, please check

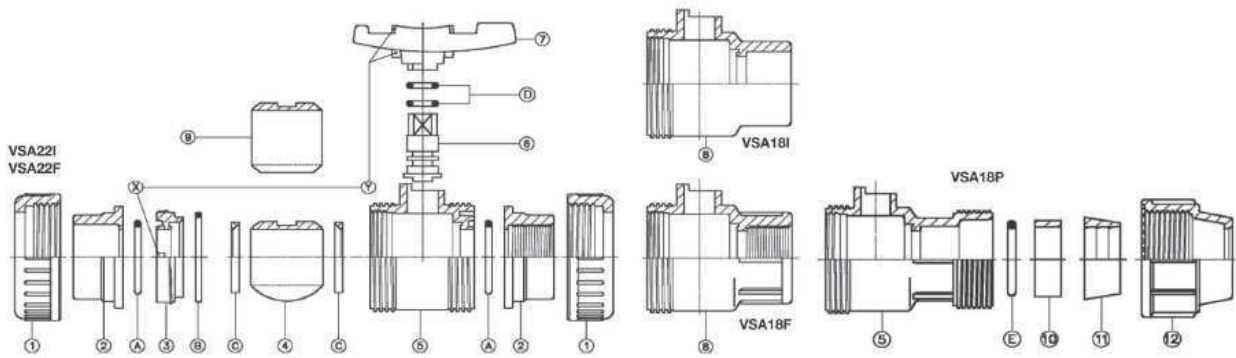
the correct line-up of the system and the pipe length. An excessive tightening of the unions could finally break them.

Before the valve is cycled, all dirt, sand or other material should be flushed from the system. This is to prevent scarring of the ball and/or seats.

It is important to avoid rapid closures/opening of the valve to eliminate the possibility of water hammer causing damage to the pipeline.

It is necessary that all installation and maintenance personnel become familiar with the proper solvent cement and the adjoining procedure.

PVC-U Safeblock water ball valves



VALVE COMPONENTS

Pos	Components	n°			
		Material	VSA22	VSA18	
1	Union nut	2	1	1	PVC
2	End connector	2	1	1	PVC
3	Adjustable support	1	1	1	PVC
4	Ball DN≥40 a ≤100	1	-	1	PVC
5	Body	1	-	1	PVC
6	Stem	1	1	1	PVC
7	Handle	1	1	1	PVC
8	Singleunionbody	-	1	-	PVC
9	Ball DN≥10 a ≤32	1	-	-	PVC
10	Packing presserbush	-	-	1	PVC
11	Clip ring	-	-	1	POM
12	Quickjointnut	-	-	1	PVC
A	O-ring body	2	1	1	EPDM
B	O-ring support	1	1	1	EPDM
C	Ball seal	2	2	1	PTFE+PE
D	O-ring stem	2	2	2	EPDM
E	Quick joint O-ring	-	-	1	EPDM

PVC: Polyvinyl chloride

EPDM: Ethylene-propylene

PTFE+PE: Polytetra+fluoroethylene+polyethylene

POM: Polyacetale

DISASSEMBLING AND REASSEMBLING IN CASE OF MAINTENANCE DOUBLE UNION VSA.22. ...

Screwing the union nut (1) it is possible to take out radially from the system the whole body of the valve.

To reach the internal parts of the valve act as follows:

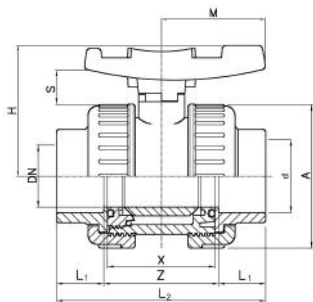
- 1- Set the valve on open position.
- 2- Withdraw the handle (7) from control stem (6).
- 3- Screw the support (3) of the body (5) using the two teeth (Y) of the handle (7) screwing operations should be done counter-clockwise.
- 4- After having screwed the support (3) and taken out the O-ring B which was inside (5), it is possible to reach all the internal parts of the valve to check the O-rings and in case substitute them.
 - to disassemble the ball (4)-(9) turn it using the control stem (6) setting it in closing position to withdraw the ballonet coupling through the control stem (6);
 - to disassemble the control stem (6) of the body (5) push it downwards as far as its complete outcome.

To assemble the valve act in the opposite way being careful to set the O-ring properly and greased it with silicon grease. Screw threaded support 3 straight to the end taking care not to block the ball (4)-(9).

PVC-U safeblock water ball valves

PF 2 02 956 010

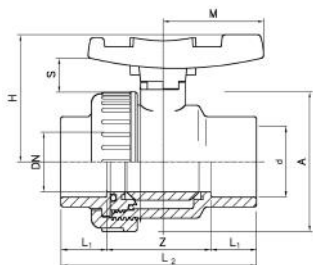
Double union safeblock ISO PVC-U Ball valve with solvent cement sockets



d (mm)	d (inch)	DN (mm)	PN (bar)	EPDM Code	SP	Weight (kg)	L1 (mm)	H (mm)	L2 (mm)	A (mm)	S (mm)	Z (mm)	X (mm)	M (mm)
16		10	16	VSA221160	50	0.130	14	53	76	50	19	48	42	40
20		15	16	VSA221200	50	0.130	16	53	80	50	19	48	41	40
25		20	16	VSA221250	45	0.205	19	60	91	59	19	53	48	45
32		25	16	VSA221320	50	0.295	22	67	102	68	21	58	54	51
40		32	16	VSA221400	36	0.435	26	79	120	80	25	68	62	59
50		40	16	VSA221500	24	0.680	31	90	140	94	27	78	72	70
63		50	16	VSA221630	13	1.160	38	107	169	115	29	93	86	84
75	2 ½	65	10	VSA221750	8	2.200	44	129	206	145	32	118	110	103
90		80	10	VSA221900	4	3.310	51	143	242	168	36	140	128	120
110		100	10	VSA221910	2	5.925	61	169	282	210	43	160	150	141

PF 2 02 956 010

Single union safeblock ISO PVC-U Ball valve with solvent cement sockets



d (mm)	d (inch)	DN (mm)	PN (bar)	EPDM Code	SP	Weight (kg)	L1 (mm)	M (mm)	A (mm)	S (mm)	H (mm)	L2 (mm)	Z (mm)
16		10	16	VSA181160	180	0.100	14	40	50	19	53	76	48
20		15	16	VSA181200	180	0.100	16	40	50	19	53	80	48
25		20	16	VSA181250	120	0.160	19	45	59	19	60	91	53
32		25	16	VSA181320	75	0.230	22	51	68	21	67	102	58
40		32	16	VSA181400	45	0.340	26	59	80	25	79	120	68
50		40	16	VSA181500	30	0.525	31	70	94	28	90	140	78
63		50	16	VSA181630	16	0.890	38	84	115	29	107	169	93
75	2 ½	65	10	VSA181750	8	1.640	44	103	145	32	129	206	118
90		80	10	VSA181900	5	2.450	51	120	168	36	143	242	140
110		100	10	VSA181910	2	4.100	61	141	210	43	169	282	160